

teletube<sup>®</sup>  
INTERNATIONAL

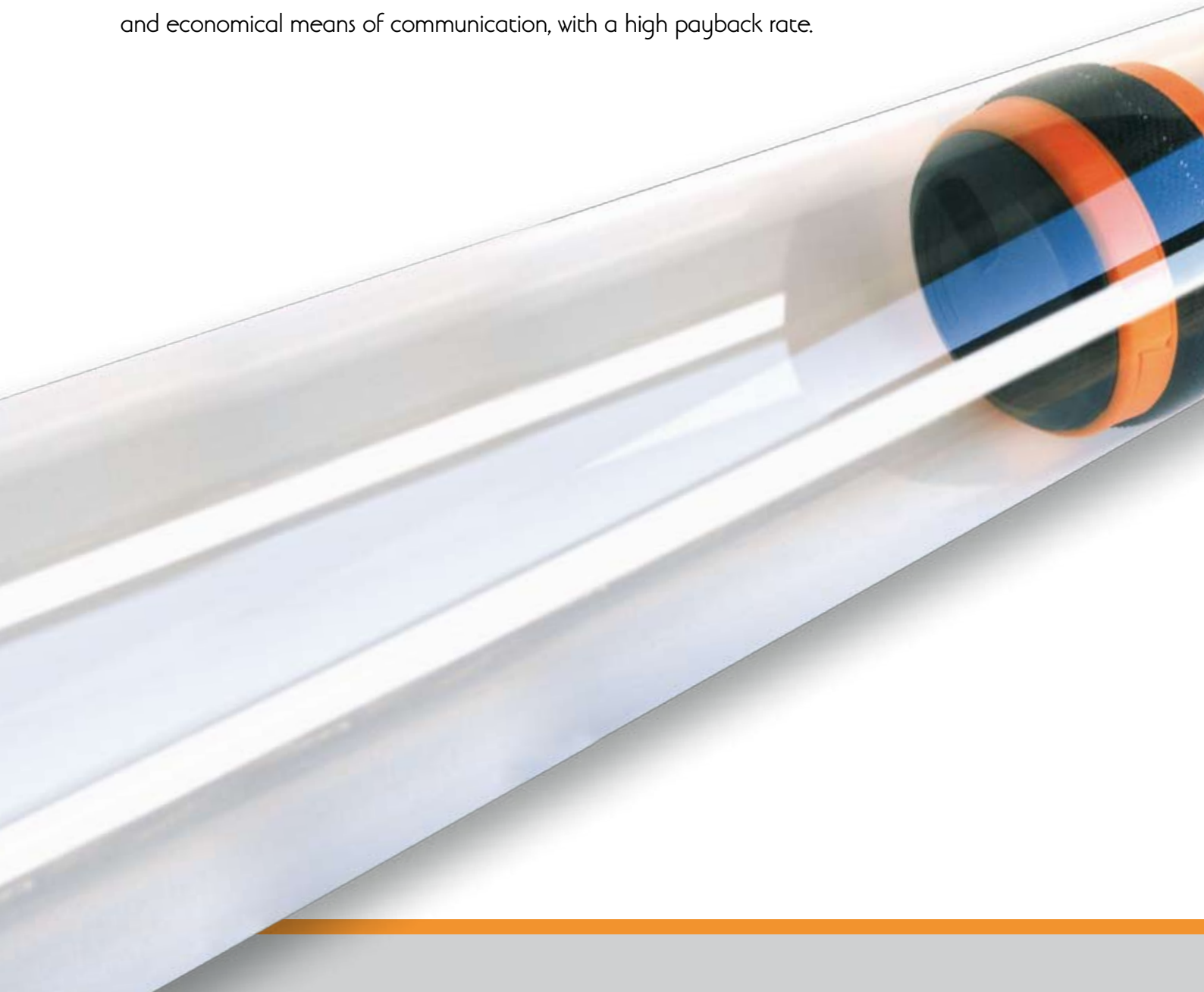


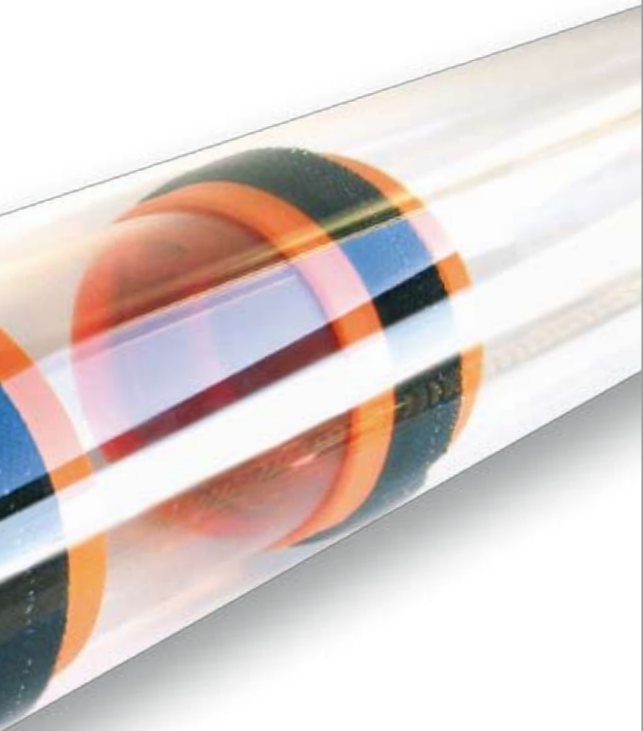
## A clear trajectory...

In today's working environment, pneumatic transport systems remain an indispensable means of communication. Your documents or small items are transported through a tube network, fast, efficiently and safely packed in a shuttle.

### **Pneumatic transport is your complementary means of communication...**

Internal document transport has largely been replaced by e-mail, yet there are lots of unique papers such as passports, original insurance contracts or non-digital goods, such as samples and test-prints, which still require a mechanical transport system. That is where tube-mail proves to be a modern, irreplaceable and economical means of communication, with a high payback rate.





## Expertise & Experience

For over 40 years we have been developing, manufacturing and commercialising our own Teletube pneumatic transport systems. You'll experience this know-how also with our distributors, who get all possible technical and commercial support.

## Innovation & Creativity

We are a unique partner in the development of your special applications. Your PTS is more to us than just a traditional transport solution. RFID traceability, barcodes or optical recognition, combined with the associated data exchanges, provide a link between the real world of physical objects and the virtual digital world of the information technologies.

## Technology

3D-modelling, SMD-technology, OOP, databases, SQL, interfaces, supervision, remote maintenance, SMS, e-mail, www,... Modern technologies used to a single objective: long-life systems, with low maintenance costs and many fascinating possibilities.

## Wide range

We provide for a full range of simple and complex applications, using tube diameters from 63 up to 315 mm in standard grey PVC, crystal clear acryl or metallic tubing, inside or outside, above or below ground level with reinforced waterproof tubing if needed. To transport sensitive or dangerous products we supply special inserts and adapted shuttles.

## Safety, Security & Quality

Our products are CE-marked, i.e. they comply with all applicable European directives (low voltage, machine construction, EMC and RoHS). Since 1995 we proudly carry the ISO9001-quality mark for designing and manufacturing pneumatic transport systems.

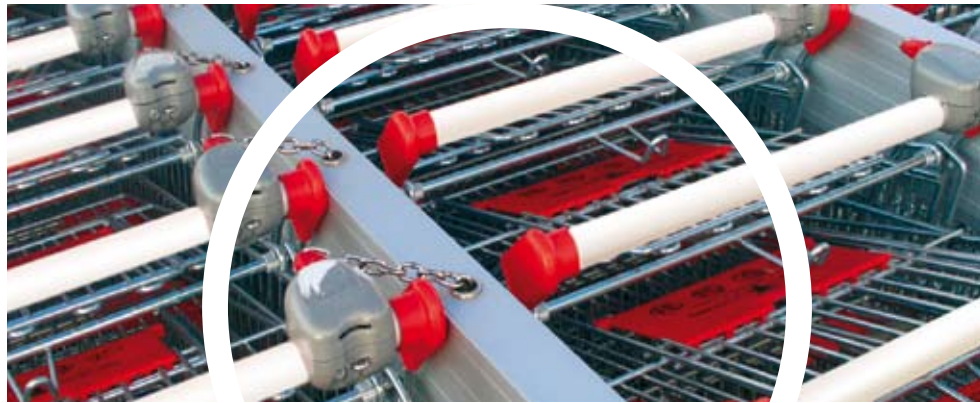


## Environment

We try to use high-efficiency components limiting all energy losses. Most of the materials that we use can easily be recycled. The metal housings are epoxy-coated in our own environment-friendly painting installation. Electronics comply with the latest European RoHS-directive that, among other things, regulates the use of lead solder.



...on all domains



### Retail and department stores

Our cash transport systems use small capsule shuttles to evacuate or exchange money between the checkouts and the central cashier with direct arrival in the safe or even the transport bag. It is possible to use specially adapted single use 'seal bags'.

### Banks

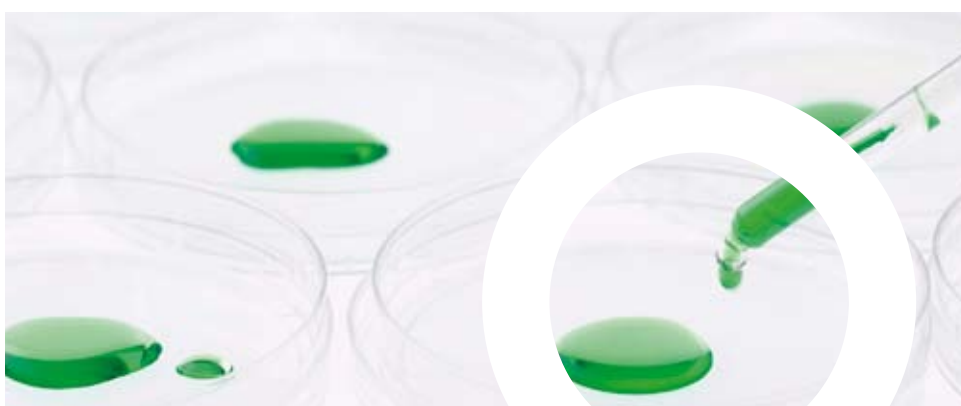
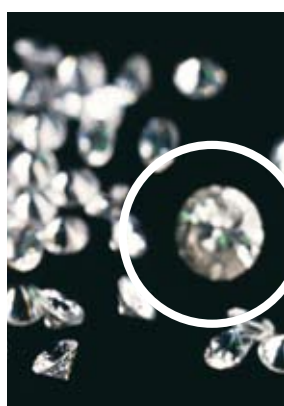
Besides applications for counters and Self-Banking, we also provide security systems to avoid the cash transporters having to leave their vehicle. We can move banknotes directly in and out of the system, without any visible shuttle. In such an application, a single and unique cash-dispenser supplies the counters, the ATMs and the self-banking units.

### Toll highway

The tollbooth revenues are regularly sent to the main building where they are individually stored, classified per user. Using the electronic identification system, users can change workplaces during their shift. At the end of the day, each user can add up his personal account. No user ever carries any cash, because the starting money is also sent by tube.

### Office

Office applications are numerous. Despite today's internet era with e-mails and e-docs, hundreds of postal and other administrative items are still being transported throughout buildings.



### Hospitals and laboratories

Blood and other biomedical samples are sent by tube from all departments to the analysis laboratory. Fully automated systems return the shuttles to their source destination. Controlled acceleration on departure and pneumatic breaking on arrival avoid shocks, and guarantee that sensitive products do not suffer from any change in condition. Medical supplies' distribution, with protected and locked arrival points, is another frequent application. You can use our special leak-proof shuttles when transporting cytostatics and other dangerous products.

### Industry

When transporting samples, documents, small parts or tools, the advantages of a pneumatic transport system can easily be evaluated. Timesavings, combined with extra comfort for the workmen, offer a quick return on investment. We provide solid solutions for your problems. Reinforced shuttles, metal tubing and industrial, ergonomic controls contribute to the overall efficiency.

### Other applications

Whenever goods or documents need to be transported, and manual transport creates loss of time or contains any risk, a pneumatic transport system is of benefit. Even in the least obvious cases, we'd like to work out a solution with you. As a designer-manufacturer we don't look at your PTS as an isolated item. To us, it must contribute to and be integrated into your total logistic solution.

...with existing solutions

**MoneyVac**, one-way, one on one

**Papyrus**, two way, one on one

**MultiSafe**, one way, many to one

**MultiNavette S**, two way, many to one

**MultiNavette Plus**, special toll application

**MultiPoint and MultiCom**, overall intercommunications

**BMF**, typical bank application

**RNF-LNE**, special ATM application



**c.p. bourg** Since 1960 the C.P. Bourg Company has been a recognised actor in the world of graphic arts. The chances are that books or brochures going through your hands have been collated, folded, stitched, glued or cut on one of our machines.

From the very beginning, when Christian-Pierre Bourg founded his company, he diversified the product range, in particular with an internal logistics division. Today, this department manages TELETUBE pneumatic transport, LOCTRAC mobile shelving and RALLYPOST monorail transport systems.

C.P. Bourg's headquarters are located in Ottignies-Louvain-la-Neuve (Belgium), with subsidiaries in Dolhain (Belgium), Rungis (France), Balingen (Germany), Walferdange (Luxemburg) and a sister company in New Bedford (United States).

**TELETUBE**  
INTERNATIONAL  
[www.teletube.be](http://www.teletube.be)

**LOCTRAC**  
  
[www.loctrac.be](http://www.loctrac.be)

  
**rallypost**  
[www.rallypost.be](http://www.rallypost.be)

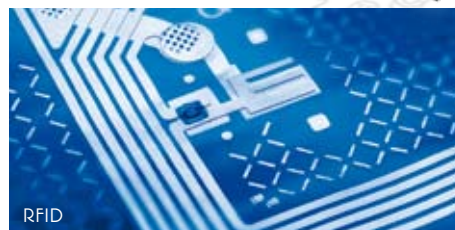
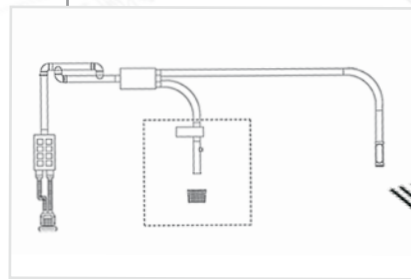
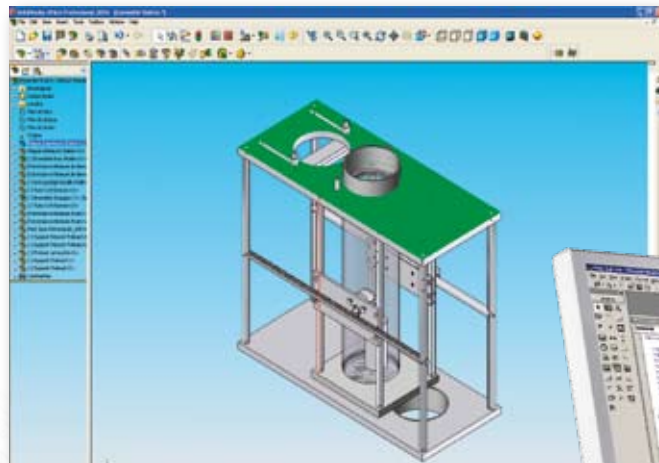
## ...custom solutions

### For specific situations

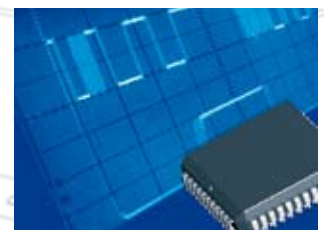
Contact us if you have a tempting idea or an exceptional application in mind. Our experienced collaborators will assist gladly in seeking answers to your questions.

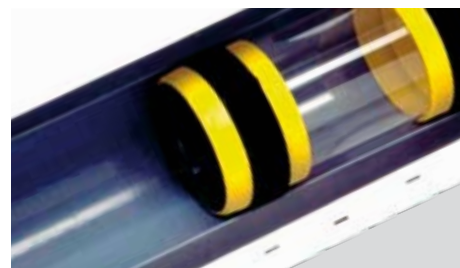
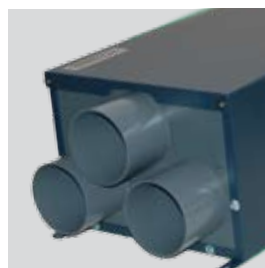
Besides developing new products and systems, our R&D department can adapt existing concepts to your needs. As a designer-manufacturer, we have total control of our products and their functionality. This approach enhances quality in general, but it also means that we can provide you with a tailor-made customised solution that exactly fits your needs.

From the starting analysis up to the final realisation, we'll guide you along the entire project trajectory. We can also provide mechanical and logical integration into your working environment, according to your wishes.



RFID





 **c.p. bourg**  
S.A.  
N.V.

C.P. Bourg nv/sa  
Teletube department  
Rue des Technologies 22  
1340 OTTIGNIES  
Belgium  
Tel: +32 10 62 23 62  
Fax: +32 10 61 65 40  
teletube@cpbourg.com

[www.teletube.be](http://www.teletube.be)

