



Check-outs



Dispatching check-outs



Pocket

The **capsules** take 50 to 70 notes, cheques or other items. The **pockets** take up to 150 notes. The **cartridges** take up to 400 notes and permit transport of coins in cartridges.

No matter what the scale of the store may be, the MULTISAFE management centre can easily handle from 2 to 120 dispatching stations. A program is available for monitoring the number and time of dispatches, origin, etc...

Monitoring Multisafe						
File Edit Options Config Communication Screen List About						
	Time	Sending From	Status	Duration	Error	
View A Day						
View A Week						
View Current Day						
Print	18:43:17	Station N°001	Arrived	00:15		
Print Setup	18:43:17	Station N°002	Arrived	00:19		
		Station N°003	Arrived	04:51		
		Station N°001	Arrived	00:16		
		Station N°003	Arrived	00:12		
		Station N°002	Arrived	00:11		
Exit		Station N°001	Failed	01:13	Error N°15	
0001 Med 04-02-1		Print Current Week	Station N°001	Failed	04:51	Error N°14
0002 Med 04-02-1		Print Screen List	Station N°001	Arrived	00:14	
0001 Med 04-02-1		Station N°001	Arrived	00:14		
0002 Med 04-02-1998	18:43:17	Station N°001	Arrived	00:11		

Once the cartridge has been placed in the station, it cannot be taken out again; the money is already safe, even before it has been removed to the safe. The dispatch speed is 6 metres / second ...

The accumulation of money collected at the tills of chains stores, cinemas, service stations, etc., is increasingly endangering the safety of clients and personnel.

The only way of putting crooks off attacking the tills is to remove the object of their desires: **LITTLE MONEY = SAFETY.**

Removing the money manually through the shopping area is quite risky for the person carrying it, and costs the company valuable time.

With removal of the money by MULTISAFE pneumatic transport, the cashiers can regularly empty their tills into a protected area or straight into a safe, quite simply and without wasting any time; then they can resume their work without any worries, and without the continuous stress caused by the presence in the drawer of large sums of money.

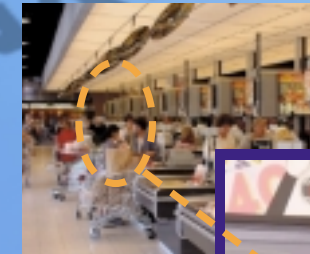


Cartridge

Lightweight and discreet, the MULTISAFE system takes up little space; it can be installed cheaply in any existing commercial layout.



Capsule



Check-outs



Dispatching check-outs